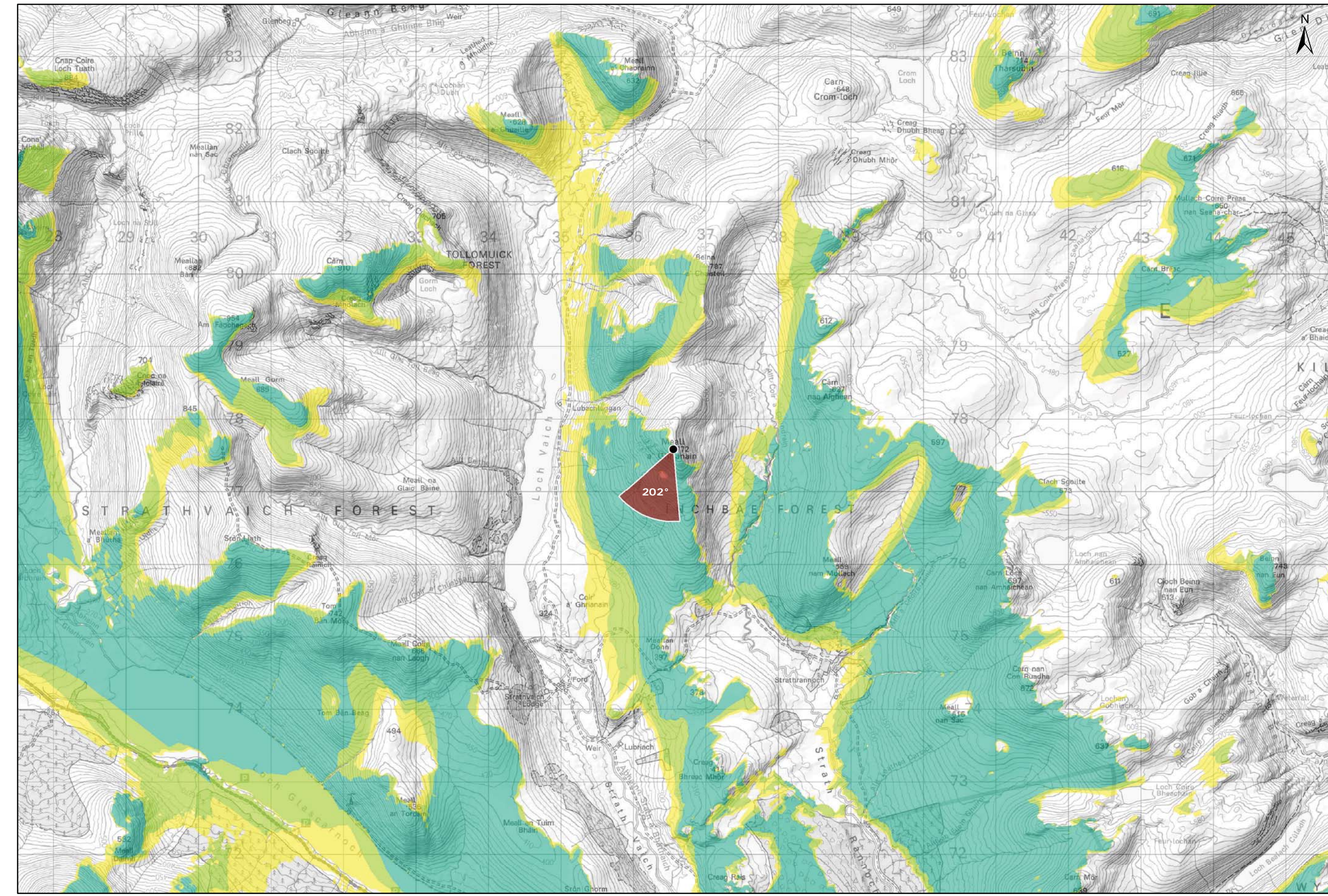
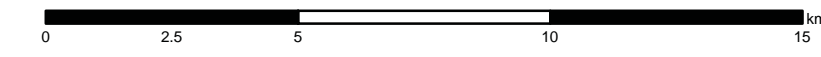
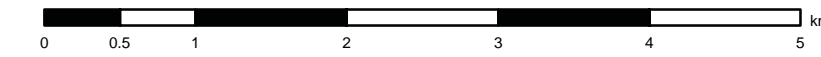


Viewpoint Location Plan Baseline Panorama
Scale: 1:150,000



Viewpoint Location Plan
Scale: 1:50,000 (Blade Tip ZTV)



Note:
1. ZTV: Created using ESRI ArcGIS 10.5 software using the following data and parameters:
Blade tip height: 133m
DTM Data: OS Terrain 5 DTM. Resampled to a 10m grid.
Observer height: 2m
No surface features, such as buildings or trees, were included in the analysis.
Earth curvature and light refraction has been included in calculations.

- Legend:**
- Proposed Turbines
 - Viewpoint Location
 - 90° Field of View Viewpoint
 - 53.5° Field of View Viewpoint

- Cumulative Wind Turbines

Wind Farm Status (01/10/2018)

Wind Farm Status (01/10/2018)

Wind Farm Status (01/10/2018)

Operational; Under Construction

Zone of Theoretical Visibility

No. of Turbines (133m) Visible

1 - 3

4 - 6

7 - 9

Blade Tip:	133m
DTM:	OS T5
DTM resolution:	5m
Observer height:	2m
Surface features:	Excluded
Earth curvature:	Included

Title: Figure 9.28a
Viewpoint 8: Beinn a Chaisleil

Lochluichart Wind Farm
Extension II

Source:
© Crown copyright and database rights (2018)
OS (license No 0100031673)

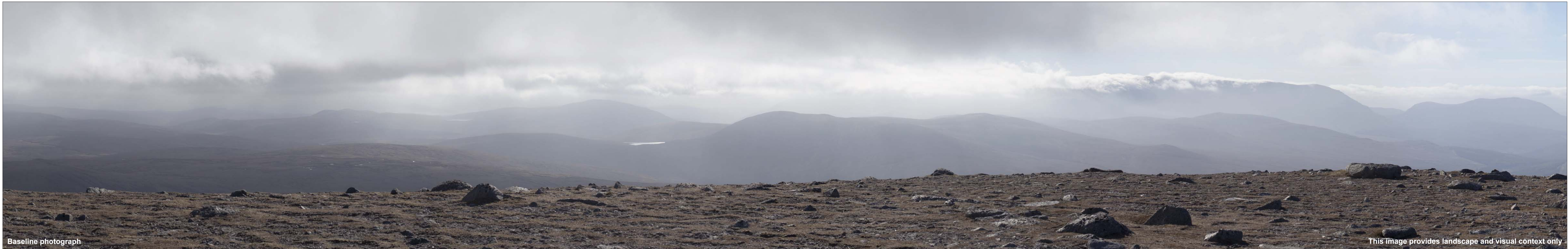
Client: Infinergy

Drawn by: MJF
Checked: JW

Date: 15/10/2018
Figure: 9.28a

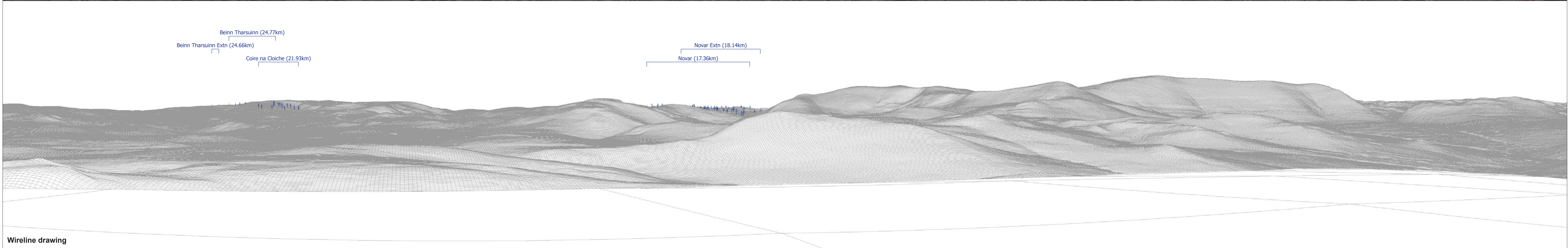
Scale: Revision No: B





Baseline photograph

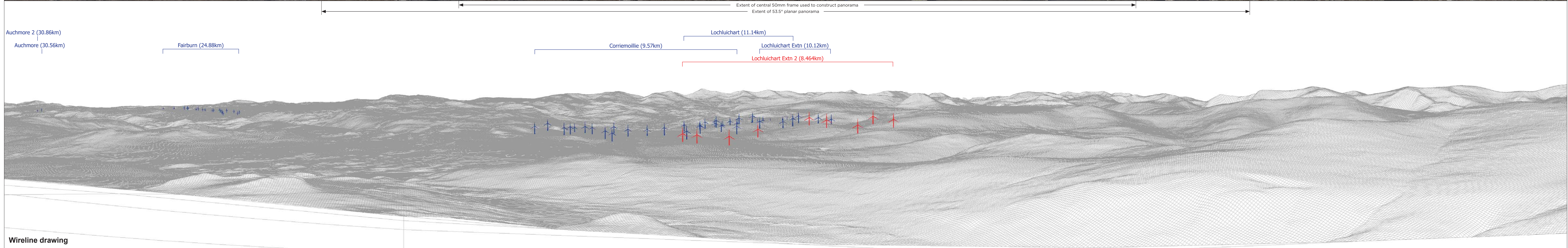
This image provides landscape and visual context only



Wireline drawing

OS reference: 236550 E 877594 N	Horizontal field of view: 90° (cylindrical projection)	Camera: Canon EOS 6D
Eye level: 774.47 m AOD	Principal distance: 522 mm	Lens: 50mm (Canon EF 50mm f/1.4)
Direction of view: 112°		Camera height: 1.5 m AGL
Nearest turbine: 8.464 km		Date and time: 04/05/17, 09:17

Figure: 9.28b
Viewpoint 8: Beinn a Chaisteil



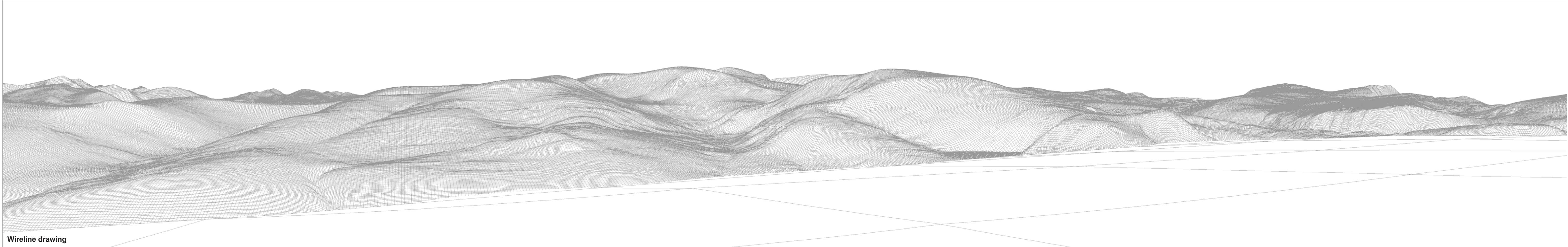
OS reference:	236550 E 877594 N	Horizontal field of view:	90° (cylindrical projection)	Camera:	Canon EOS 6D
Eye level:	774.47 m AOD	Principal distance	522 mm	Lens:	50mm (Canon EF 50mm f/1.4)
Direction of view:	202°			Camera height:	1.5 m AGL
Nearest turbine:	8.464 km			Date and time:	04/05/17, 09:17

Figure: 9.28c
Viewpoint 8: Beinn a Chaisteil



Baseline photograph

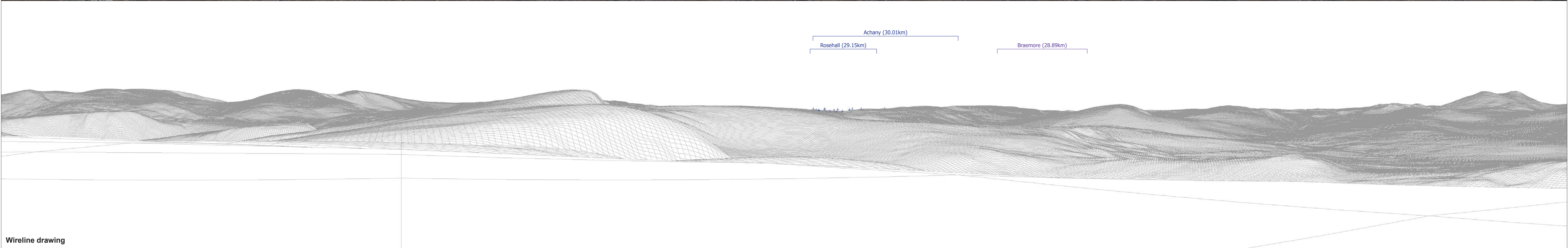
This image provides landscape and visual context only



Wireline drawing

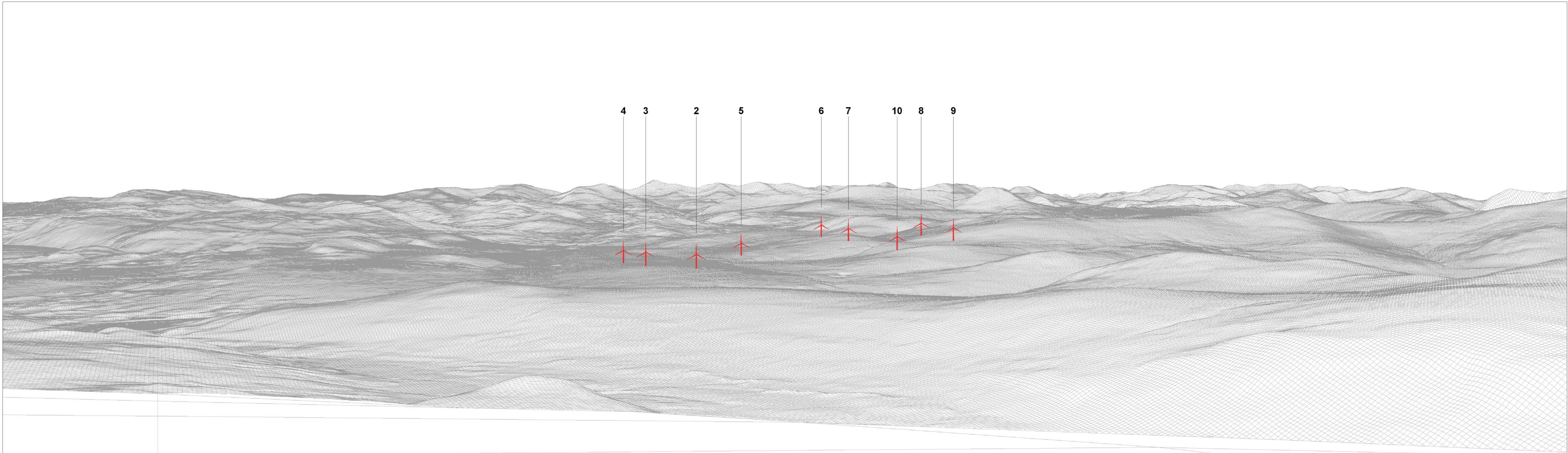
OS reference: 236550 E 877594 N	Horizontal field of view: 90° (cylindrical projection)	Camera: Canon EOS 6D
Eye level: 774.47 m AOD	Principal distance: 522 mm	Lens: 50mm (Canon EF 50mm f/1.4)
Direction of view: 292°		Camera height: 1.5 m AGL
Nearest turbine: 8.464 km		Date and time: 04/05/17, 09:17

Figure: 9.28d
Viewpoint 8: Beinn a Chaisteil



OS reference: 236550 E 877594 N	Horizontal field of view: 90° (cylindrical projection)	Camera: Canon EOS 6D
Eye level: 774.47 m AOD	Principal distance: 522 mm	Lens: 50mm (Canon EF 50mm f/1.4)
Direction of view: 22°		Camera height: 1.5 m AGL
Nearest turbine: 8.464 km		Date and time: 04/05/17, 09:17

Figure: 9.28e
Viewpoint 8: Beinn a Chaisteil



Wireline drawing

View flat at a comfortable arm's length

OS reference: 236550 E 877594 N
 Eye level: 774.47 m AOD
 Direction of view: 292°
 Nearest turbine: 8.464 km

Horizontal field of view: 53.5° (planar projection)
 Principal distance: 812.5 mm
 Paper size: 841 x 297 mm (half A1)
 Correct printed image size: 820 x 260 mm

Camera: Canon EOS 6D
 Lens: 50mm (Canon EF 50mm f/1.4)
 Camera height: 1.5 m AGL
 Date and time: 04/05/17, 09:17

Figure: 9.28f
 Viewpoint 8: Beinn a Chaisteil



Photomontage

View flat at a comfortable arm's length

OS reference: 236550 E 877594 N	Horizontal field of view: 53.5° (planar projection)	Camera: Canon EOS 6D
Eye level: 774.47 m AOD	Principal distance: 812.5 mm	Lens: 50mm (Canon EF 50mm f/1.4)
Direction of view: 292°	Paper size: 841 x 297 mm (half A1)	Camera height: 1.5 m AGL
Nearest turbine: 8.464 km	Correct printed image size: 820 x 260 mm	Date and time: 04/05/17, 09:17

Figure: 9.28g
Viewpoint 8: Beinn a Chaisteil